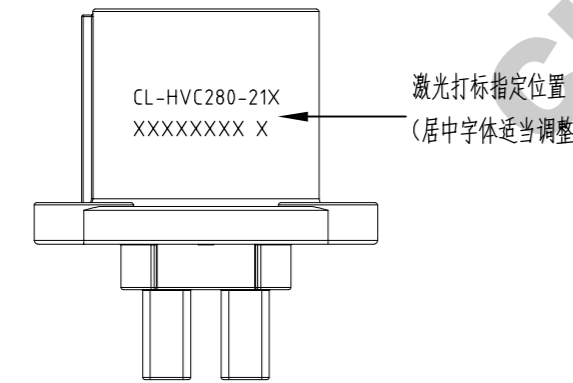
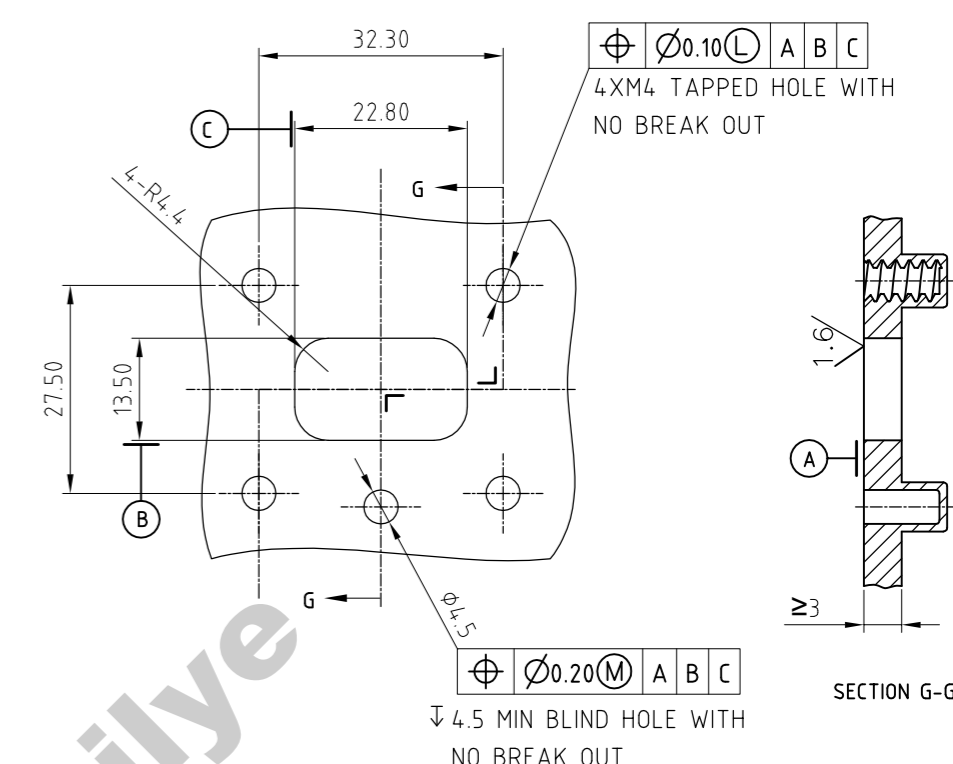
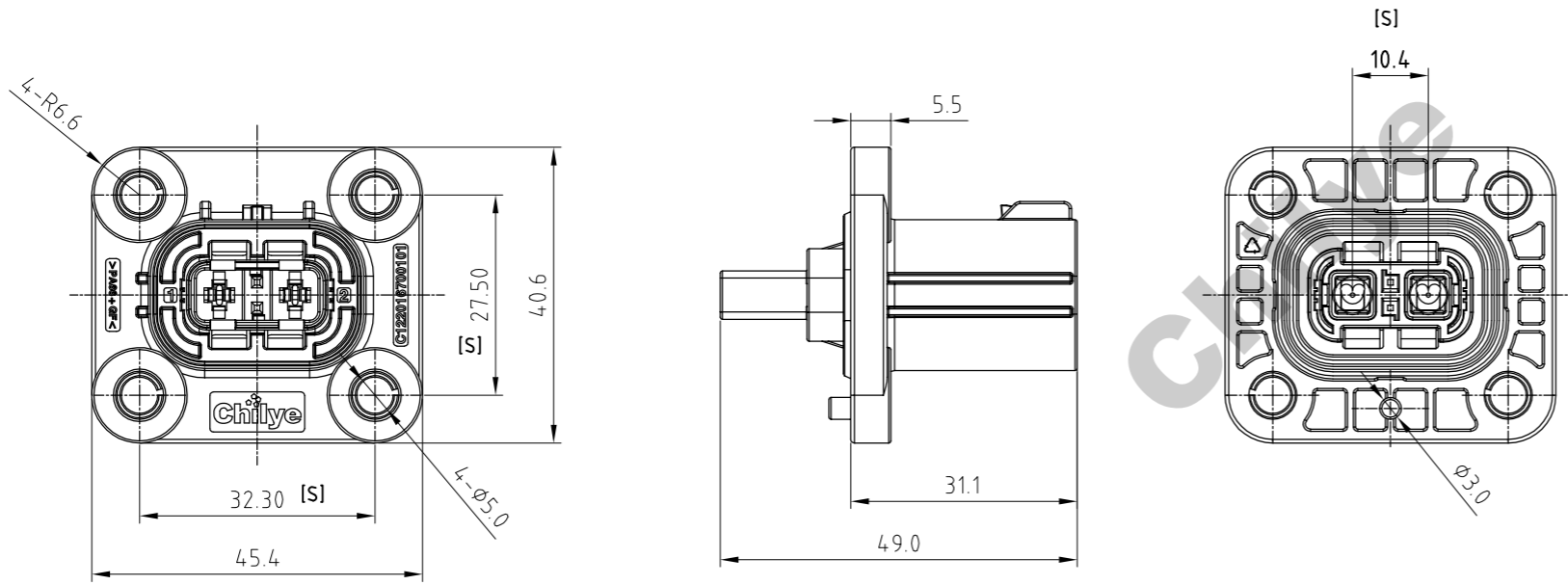


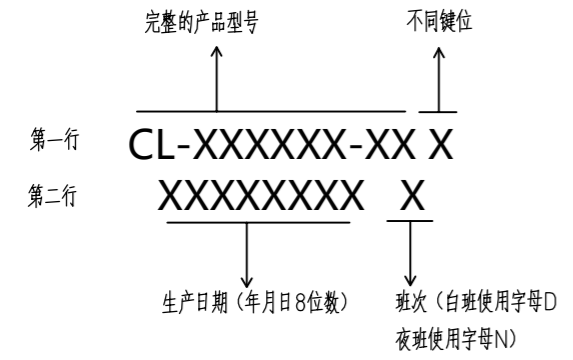
版本 REV	工程变更号 ECN No.	变更描述 CHANGED DESCRIPTION	日期 DATE	修改人 MODIFIED BY
A		首次发行(FIRST RELEASE)	2019/10/22	徐生超
B		新增6平型号;C/D/E定位销根部加筋,增加强度防断	2022/03/22	徐生超



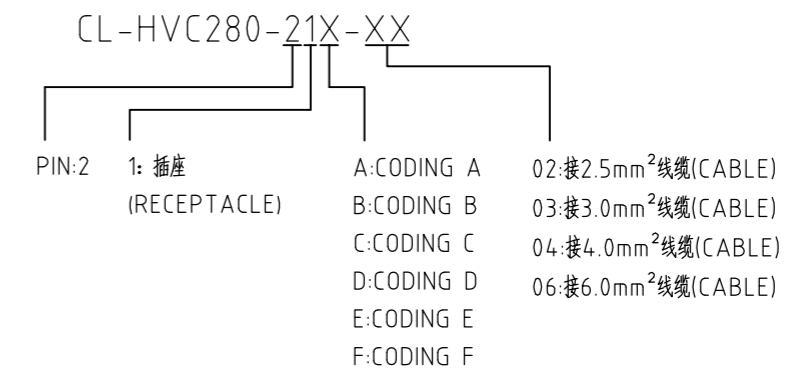
- 技术描述:**
1. 插拔寿命: 大于100次;
DURABILITY IS MORE THAN 100 TIMES;
 2. 额定电压: 800V;
RATED VOLTAGE: 800V;
 3. 额定电流: 4.0A(4mm² CABLE);
RATED CURRENT: 4.0A(4mm² CABLE);
 4. 绝缘阻抗: 200MΩ;
INSULATION RESISTANCE: 200MΩ;
 5. 耐压: 3000V AC/min;
WITHSTANDING VOLTAGE: 3000V AC/min;
 6. 防护等级: IP67, IP6K9K(已插合);
IP2XB(未插合);
IP RATING: IP67, IP6K9K(MATED);
IP2XB(UNMATED);
 7. 工作温度: -40℃至125℃;
OPERATION TEMPERATURE: -40℃至125℃;
 8. 阻燃等级: UL94V-0;
FLAME RETARDANT RATING: UL94-V0;
 9. M4螺丝扭力: 2.4±0.6 Nm;
M4 SCREW TORQUE: 2.4±0.6 Nm;
 10. 螺钉头或垫片外径: Ø8~Ø12mm。
SCREW CAP OR GASKET DIAMETER: Ø8~Ø12mm。
 11. 材料符合ROHS和REACH要求
THE MATERIAL MEETS ROHS AND REACH REQUIREMENTS

MOUNTING INTERFACE SPECIFICATION
(CODING A MOUNTING INTERFACE SHOWN)
REFER TO PAGE 2/2 FOR CODING B~F MOUNTING DIFFERENCES

激光打标打标内容和格式说明:



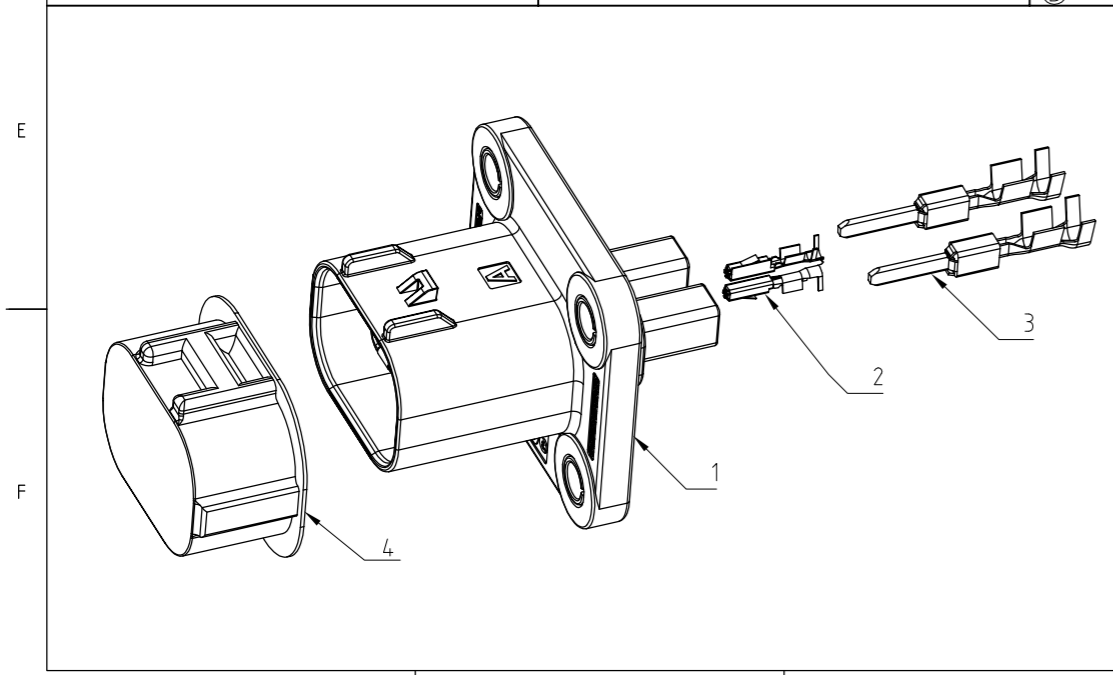
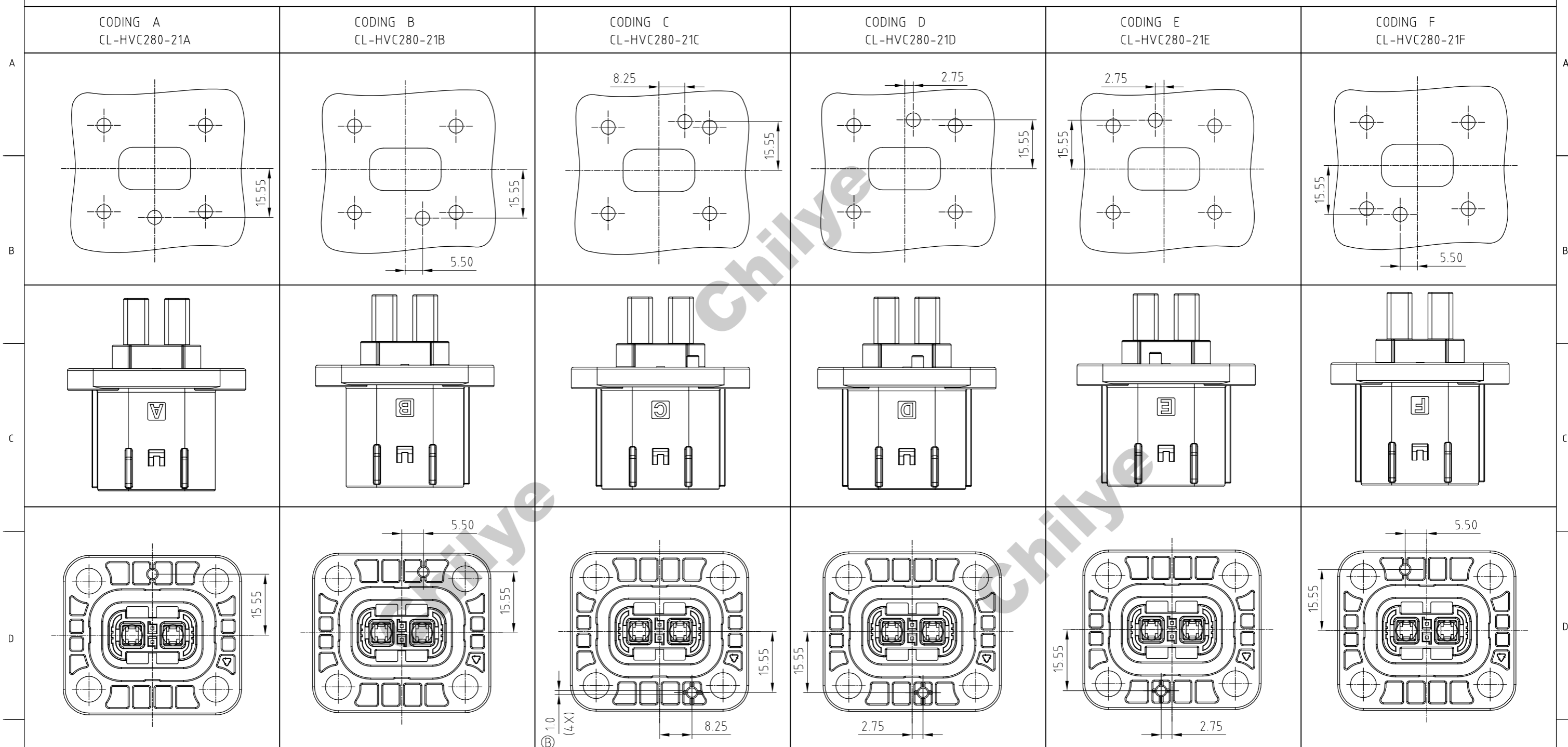
料号说明(PRODUCT MODEL INSTRUCTION):



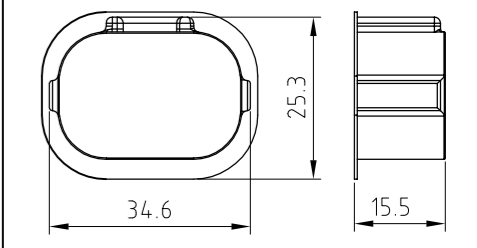
2.5-4mm ²	2.7~4.3 mm
SIZE	OUTSIDE DIAMETER
SCOPE OF CABLE OUTSIDE DIAMETER	

THE DOCUMENT CONTAINS INFORMATION WHICH IS PROPRIETARY TO CHILYE AND SHOULD NOT BE USED WITHOUT WRITTEN PERMISSION						产品名称/PART NAME HVC280 二芯插座总成 HVC280 2P RECEPTACLE ASSY					
X.X ±0.3	X±1°	第一视角 PROJECTION	设计 DESIGNER	徐生超	2019/10/22	文件类型 DOCUMENT	图纸编号/DRAWING NUMBER C-CL-HVC280-21X				
X.XX ±0.1	X.X±0.5°		标准化 STANDARDIZATION	审核 CHECKED		CAD	图纸页数 SHEET	单位 UNIT	图纸 SIZE	比例 SCALE	版次 REV
重量 WEIGHT	35 g		材料 MATERIAL	核准 APPROVED		1/2	mm	A3			B

开孔图(MOUNTING INTERFACE)



5	C1220167009	2P SOCKET DUST CAP	1	选配
4	E1122003024	2.8mm BLADE TERMINAL FOR 6.0mm ² WIRE	2	
3	E1122003002	2.8mm BLADE TERMINAL FOR 2.5~4.0mm ² WIRE	2	
2	E1122003001	MQS RECEPTACLE FOR 0.5~0.75mm ² WIRE	2	
1.6	CH10016700106	2P RECEPTACLE F ASSY	1	
1.5	CH10016700105	2P RECEPTACLE E ASSY	1	
1.4	CH10016700104	2P RECEPTACLE D ASSY	1	
1.3	CH10016700103	2P RECEPTACLE C ASSY	1	
1.2	CH10016700102	2P RECEPTACLE B ASSY	1	
1.1	CH10016700101	2P RECEPTACLE A ASSY	1	
ITEM	PART NO	DESCRIPTION	QTY	REMARK



4 二芯插座防尘盖(C1220167009)

文件类型	图纸编号/DRAWING NUMBER			
DOCUMENT	C-CL-HVC280-21X			
CAD				
图纸页数	单位	图纸	比例	版次
SHEET	UNIT	SIZE	SCALE	REV
2/2	mm	A3		B