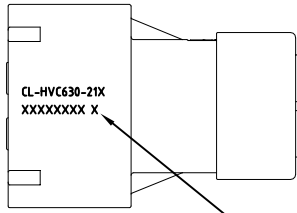
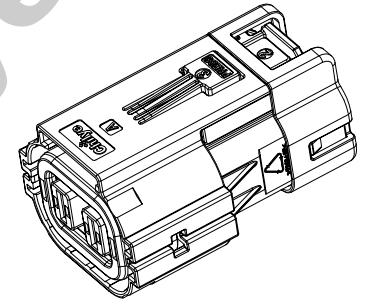
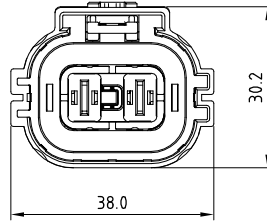
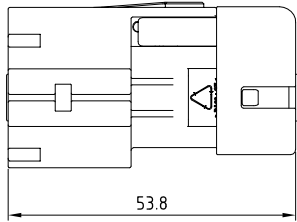
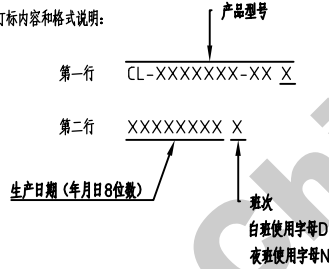


版本 REV	工程变更号 ECN No.	变更描述 CHANGED DESCRIPTION	日期 DATE	修改人 MODIFIED BY
A		首次发行(FIRST RELEASE)	2023/06/12	徐生超



激光打标指定位置  
(居中字体适当调整)

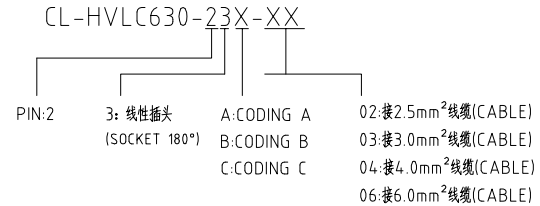
激光打标内容和格式说明:



技术描述:

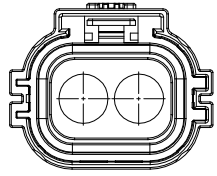
- 插拔寿命:大于100次;  
DURABILITY IS MORE THAN 100 TIMES;
- 额定电压:800V;  
RATED VOLTAGE:800V;
- 额定电流:4.0A(4平线);  
RATED CURRENT:4.0A(6mm<sup>2</sup> CABLE);
- 绝缘电阻:200MΩ;  
INSULATION RESISTANCE:200MΩ;
- 耐压:3000V AC/min;  
WITHSTANDING VOLTAGE:3000V AC/min;
- 防护等级:IP67,IP6K9K(已插合);  
IP2XB(未插合);  
IP RATING:IP67,IP6K9K(MATED);  
IP2XB(UNMATED);
- 工作温度:-40℃至125℃;  
OPERATION TEMPERATURE:-40℃至125℃;
- 阻燃等级:UL94V-0  
FIRE RATING:UL94V-0
- 材料符合ROSH和REACH要求  
THE MATERIAL MEETS ROHS AND REACH REQUIREMENTS

料号说明(PRODUCT MODEL INSTRUCTION):

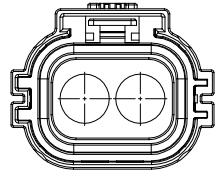


6.0mm <sup>2</sup>	6.0~6.6 mm
2.5~4mm <sup>2</sup>	5.1~5.8 mm
SIZE	OUTSIDE DIAMETER
SCOPE OF CABLE OUTSIDE DIAMETER	

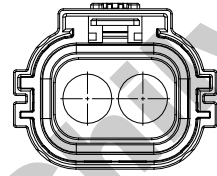
THE DOCUMENT CONTAINS INFORMATION WHICH IS PROPRIETARY TO CHILYE AND SHOULD NOT BE USED WITHOUT WRITTEN PERMISSION				Chilye 智绿		产品名称/PART NAME HVC630 二芯线性插头总成 HVC630 2P PLUG 180° ASSY				
X.X ±0.5	X°±1°	第一视角 PROJECTION	设计 DESIGNER	徐生超	2023/06/12	文件类型 DOCUMENT	图纸编号/DRAWING NUMBER CL-HVC630-23X			
X.XX ±0.1	X.X°±0.5°		标准化 STANDARDIZATION			CAD				
重量 WEIGHT	74 g	材料 MATERIAL	审核 CHECKED			图纸页数 SHEET	单位 UNIT	图幅 SIZE	比例 SCALE	版次 REV
			批准 APPROVED			1/3	mm	A3		A



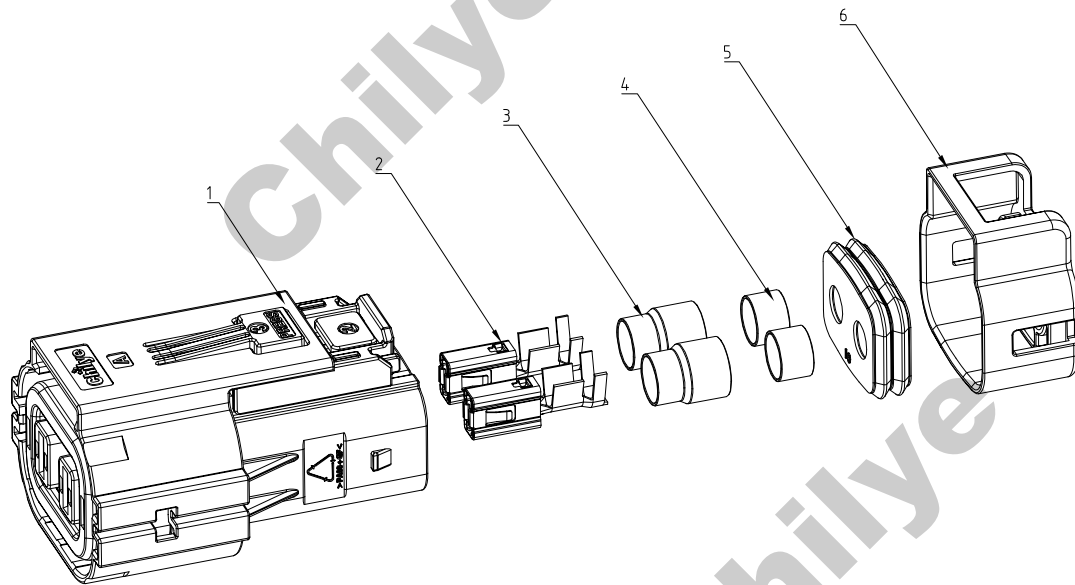
CODING A  
CL-HVC630-23A



CODING B  
CL-HVC630-23B

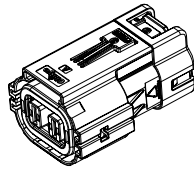
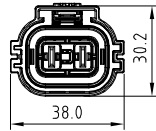
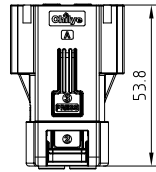


CODING C  
CL-HVC630-23C



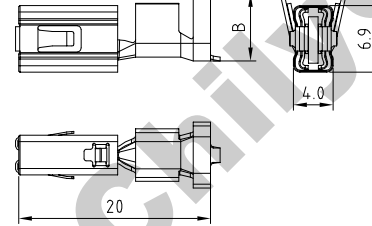
ITEM	PART DWG.	CABLE DIA ( $\phi$ mm)	PART NUMBER	D(mm)	QUANTITY
1		—	C1220392002XX	—	1
2		2.5~4.0平	E1122003009	—	2
		4.0~6.0平	E1122003008	—	2
3		5.1~5.7	C1200011006	7.2	2
		6.0~6.6	C1200011003	8.0	2
4		5.1~5.7	C120001100201	5.8	2
		6.0~6.6	C120001100202	6.6	2
5		4.11~5.48	C127039200201	3.6	1
		5.10~6.60	C127039200202	4.9	1
6		4.11~4.76	C1220392004.01	4.9	1
		4.76~5.48	C1220392004.02	5.6	1
		5.10~6.00	C1220392004.03	6.2	1
		6.00~6.60	C1220392004.04	6.7	1

文件类型		图纸编号/DRAWING NUMBER			
DOCUMENT		CL-HVC630-23X			
CAD					
图纸页数	单位	图纸	比例	版次	
SHEET	UNIT	SIZE	SCALE	REV	
2/3	mm	A3	$\frac{\quad}{\quad}$	A	

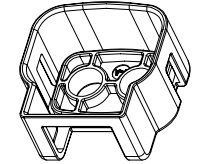
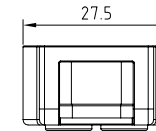
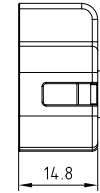
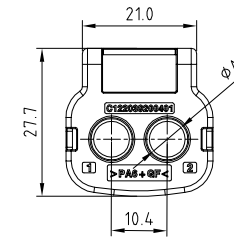


HVC630-23X 插头壳图纸

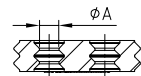
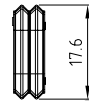
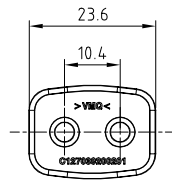
3	C122039200203	HVC630-21X插头壳C
2	C122039200202	HVC630-21X插头壳B
1	C122039200201	HVC630-21X插头壳A
序号	料号	名称



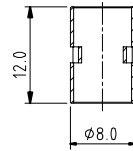
2	E1122003008	端子4.0-6.0	6.7	7.0
1	E1122003009	端子2.5-4.0	5.6	5.9
序号	料号	名称	尺寸A	尺寸B



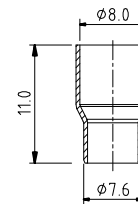
4	C122039200404	HVC630二芯插头尾槽φ6.7	6.7	6
3	C122039200403	HVC630二芯插头尾槽φ6.2	6.2	2.5/3/4
2	C122039200402	HVC630二芯插头尾槽φ5.6	5.6	
1	C122039200401	HVC630二芯插头尾槽φ4.9	4.9	
序号	料号	名称	尺寸A	线径(平)



2	C127039200202	线缆防水圈φ4.9	4.9
1	C127039200201	线缆防水圈φ3.6	3.6
序号	料号	名称	尺寸A

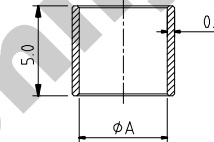


料号: C1200011006



料号: C1200011003

2	C1200011003	外屏蔽压管-φ6平
1	C1200011006	外屏蔽压管-2.5~4平
序号	料号	名称



2	C120001100202	内屏蔽压管-φ6	6.6
1	C120001100201	内屏蔽压管-2.5~4平	5.8
序号	料号	名称	尺寸A



文件类型	图纸编号/DRAWING NUMBER			
DOCUMENT	CL-HVC630-23X			
CAD				
图纸页数	单位	图幅	比例	版次
SHEET	UNIT	SIZE	SCALE	REV
3/3	mm	A3		A