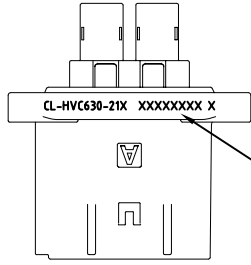
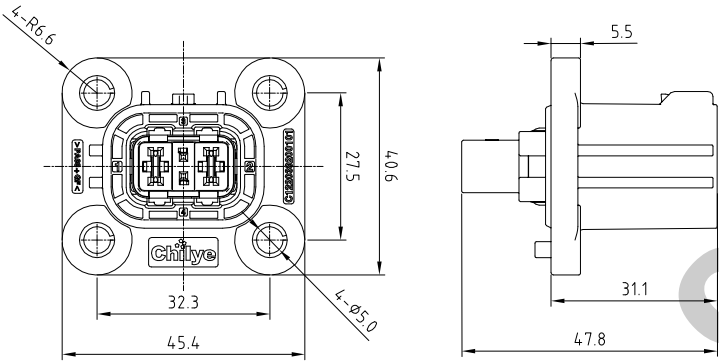
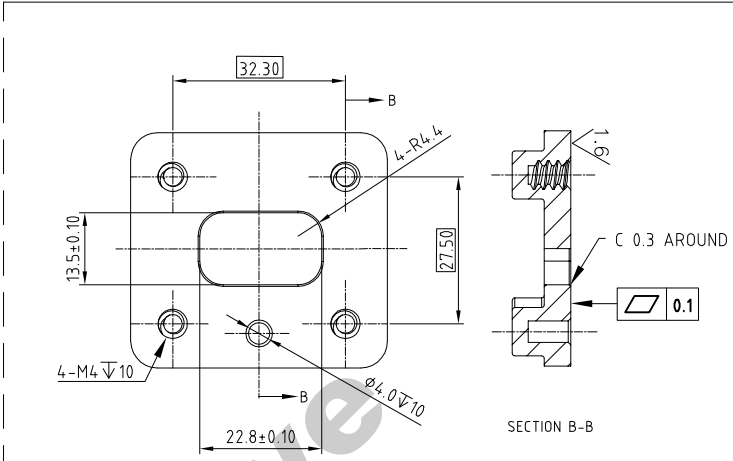
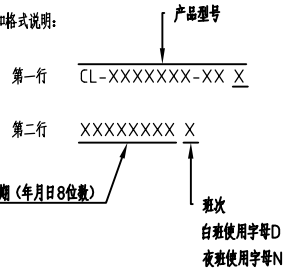


| | | | | |
|-----------|------------------|-----------------------------|------------|--------------------|
| 版本 REV | 工程变更号 ECN No. | 变更描述 CHANGED DESCRIPTION | 日期 DATE | 修改人 MODIFIED BY |
| A | | 首次发行(FIRST RELEASE) | 2023/05/22 | 徐生超 |



激光打标指定位置
(居中字体适当调整)

激光打标内容和格式说明:



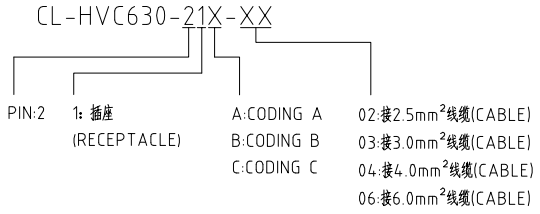
MOUNTING INTERFACE SPECIFICATION
(CODING A MOUNTING INTERFACE SHOWN)
REFER TO PAGE 2/2 FOR CODING B C MOUNTING DIFFERENCES

技术描述:

1. 插拔寿命: 大于100次;
DURABILITY IS MORE THAN 100 TIMES;
2. 额定电压: 800V;
RATED VOLTAGE: 800V;
3. 额定电流: 40A(4平线);
RATED CURRENT: 40A(6mm² CABLE);
- [C] 4. 绝缘阻抗: 200MΩ;
INSULATION RESISTANCE: 200MΩ;
- [C] 5. 耐压: 3000V AC/min;
WITHSTANDING VOLTAGE: 3000V AC/min;
6. 防护等级: IP67, IP6K9K(已插合);
IP2XB(未插合);
IP RATING: IP67, IP6K9K(MATED);
IP2XB(UNMATED);
7. 工作温度: -40℃至125℃;
OPERATION TEMPERATURE: -40℃至125℃;
- [C] 8. 阻燃等级: UL94V-0;
FIRE RATING: UL94V-0;

- [C] 9. 材料符合ROSH和REACH要求
THE MATERIAL MEETS ROHS AND REACH REQUIREMENTS
10. M4螺丝扭力: 2.4±0.6 Nm;
M4 SCREW TORQUE: 2.4±0.6 Nm;
11. 螺钉头或垫片外径: φ8~φ12mm.
SCREW CAP OR GASKET DIAMETER: φ8~φ12mm.

料号说明(PRODUCT MODEL INSTRUCTION):

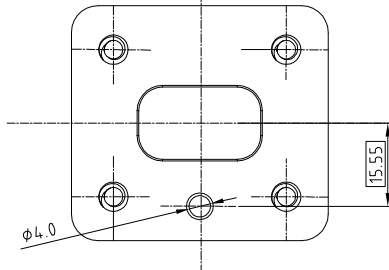


| | |
|---------------------------------|------------------|
| 6mm ² | 4.0~4.3 mm |
| 4mm ² | 3.4~3.7 mm |
| 3mm ² | 3.0~3.4 mm |
| 2.5mm ² | 2.7~3.0 mm |
| SIZE | OUTSIDE DIAMETER |
| SCOPE OF CABLE OUTSIDE DIAMETER | |

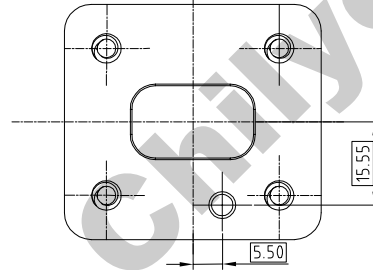
| | | | | | | | | | | |
|--|----------------------|--------------------|------------------------|-----------|------------|--|---------------------|------------|-------------|-----------|
| THE DOCUMENT CONTAINS INFORMATION WHICH IS PROPRIETARY TO CHILYE AND SHOULD NOT BE USED WITHOUT WRITTEN PERMISSION | | | | Chilye 智绿 | | 产品名称/PART NAME HVC630 二芯插座总成 HVC630 2P RECEPTACLE ASSY | | | | |
| X.X ±0.3 | X ^{±1°} | 第一视角 PROJECTION | 设计 DESIGNER | 徐生超 | 2023/05/22 | 文件类型 DOCUMENT | 图纸编号/DRAWING NUMBER | | | |
| X.XX ±0.1 | X.X ^{±0.5°} | | 标准化 STANDARDIZATION | | | CAD | CL-HVC630-21X | | | |
| 重量 WEIGHT | 65.08 g | 审核 CHECKED | 批准 APPROVED | | | 图纸页数 SHEET | 单位 UNIT | 图纸 SIZE | 比例 SCALE | 版次 REV |
| 材料 MATERIAL | | | | | | 1/2 | mm | A3 | | A |

开孔图(MOUNTING INTERFACE)

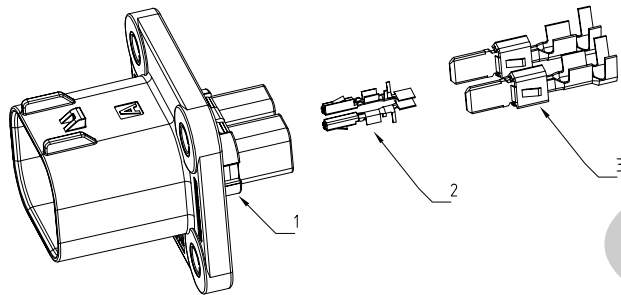
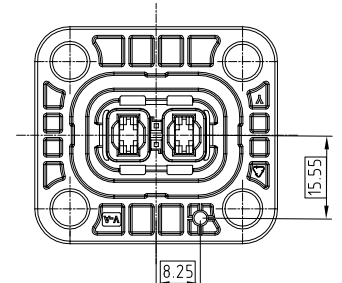
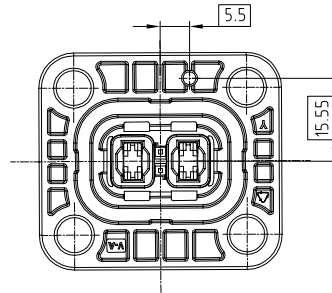
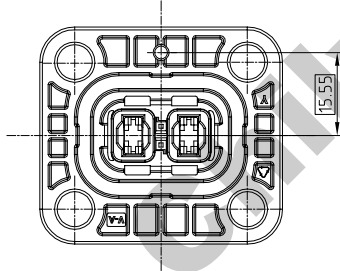
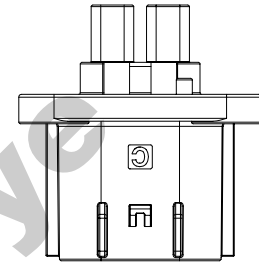
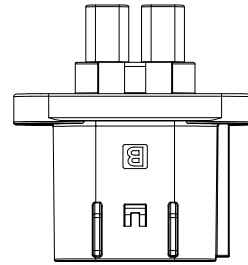
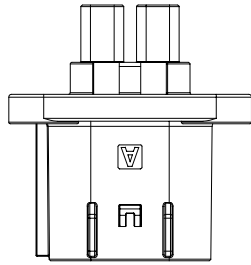
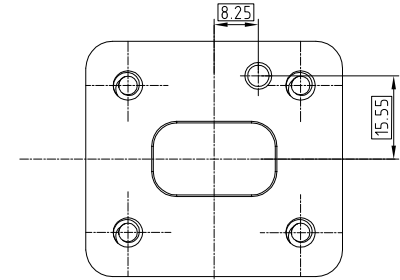
CODING A
CL-HVC630-21A



CODING B
CL-HVC630-21B



CODING C
CL-HVC630-21C



| | | | | |
|------|---------------|--|-----|--------|
| 3.2 | E1122003006 | 6.3mm BLADE TERMINAL FOR 6.0mm ² WIRE | 2 | |
| 3.1 | E1122003007 | 6.3mm BLADE TERMINAL FOR 2.5~4.0mm ² WIRE | 2 | |
| 2 | E1122003001 | MQS RECEPTACLE FOR 0.5~0.75mm ² WIRE | 2 | |
| 1.3 | CH10039200103 | 2P RECEPTACLE C ASSY | 1 | |
| 1.2 | CH10039200102 | 2P RECEPTACLE B ASSY | 1 | |
| 1.1 | CH10039200101 | 2P RECEPTACLE A ASSY | 1 | |
| ITEM | PART NO | DESCRIPTION | QTY | REMARK |

| 文件类型 | | 图纸编号/DRAWING NUMBER | | | |
|----------|------|---------------------|-------|-----|--|
| DOCUMENT | | CL-HVC630-21X | | | |
| CAD | | | | | |
| 图纸页数 | 单位 | 图幅 | 比例 | 版次 | |
| SHEET | UNIT | SIZE | SCALE | REV | |
| 2/2 | mm | A3 | | A | |